



- FOR PERMANENT INSTALLATION
- AVAILABLE IN A VARIETY OF RATINGS
- DIRECT KNX CHAIN LINK
- PLACEMENT VIRTUALLY ANYWHERE ON THE TRUSS
- DIRECT KNX CABLE/TENSION ROD
- NO SHACKLES
- MULTIPLE BALANCE POINTS FOR HANGING UNBALANCED LOADS
- MULTIPLE CONNECTIONS (ANTI-ROLL)
- LATERAL CONNECTIONS (ANTI-SWAY)
- COSMETICALLY APPEALING FINISHES
- VERY LOW PROFILE

ESP-KNX UD PERMAPICK Commercial

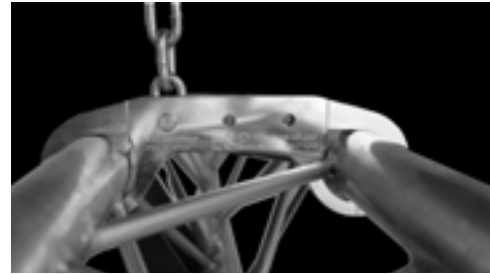
FASTER, STRONGER, SAFER, CODE COMPLIANT CONNECTIONS WITH ESP TRUSS PICKS

CS-ESP004-Rev.H-03/08/2017

GEARED FOR PERMANENT INSTALLATION

- **PLACE VIRTUALLY ANYWHERE**
A FIRST FOR ANY RIGID TRUSS PICK DESIGN. TRULY FLEXIBLE POSITIONING AS THE BODY OF THE PICK BRIDGES OVER THE WEB TUBES OF THE TRUSS ALLOWING YOUR PICK POINT TO BE WHERE IT NEEDS TO BE AND NOT WHERE THE TRUSS FORCES IT TO BE.
- **DIRECT KNX CONNECTIONS**
 - VERTICAL CONNECTIONS (PATENT PENDING) CONNECT DIRECTLY TO LIFT CHAIN, TENSION ROD, OR AIRCRAFT CABLE WITHOUT INTERMEDIATE SHACKLES OR OTHER HARDWARE, PROVIDING AN ALMOST INVISIBLE AND SEAMLESS VERTICAL CONNECTION TO YOUR HORIZONTAL LOAD BEARING MEMBER.
 - LATERAL CONNECTIONS ALLOW FOR QUICKLY AND SEAMLESSLY MEETING LATERAL SEISMIC LOADING REQUIREMENTS. THEY ALLOW CONNECTION DIRECTLY TO THE TRUSS PICK BODY WHICH WHEN SLIP-CRITICALLY CONNECTED BETWEEN THE TRUSS WEBS ALLOW THE SEISMIC LOAD TO BE TRANSFERRED TO THE CHORD TUBES UNIFORMLY.
- **MACHINED BILLET CONSTRUCTION**
PROVIDES AN EXTREMELY TOUGH, HIGH-VALUE ADDED AESTHETIC AND ROCK-AND-ROLL APPEAL THAT NEVER TAKES AWAY FROM THE NATURAL BEAUTY OF SPACE FRAME TRUSS DESIGNS.

- **JUST PLAIN FAST**
ASSEMBLY AND CONNECTION MAKE THESE PICKS THE IDEAL SOLUTION FOR PROFESSIONAL INSTALLERS WORKING ON CODE COMPLIANT APPLICATIONS.
 - **RATINGS**
EACH UD PERMAPICK HAS A MAXIMUM CAPACITY OF 600LBS. THRU BODY.
 - **CODE COMPLIANT**
ELEGANT DESIGN SEPARATES ESP FROM THE COMPETITION, ALL WHILE ADHERING TO IBC AND STATE CODES.
 - **OPTIONS**
AVAILABLE TO FIT ALL COMMERCIAL TRI AND BOX TRUSS. CONSULT ESP FOR SUPER FAST TURNAROUND CUSTOM APPLICATIONS.
- AVAILABLE FINISHES
STANDARD.....MACHINED ALUMINUM
COLORS.....TO SPECIFICATION



PATENT PENDING

IBC 2012 AND CODE COMPLIANT IN 50 STATES

- SF5 MINIMUM FOR OVERHEAD USE
- 3G LATERAL LOAD RATING FOR MOST APPLICATIONS
- CORROSION RESISTANT CONSTRUCTION
- CLEAR SAFE LOAD LIMIT AND RIGGING MARKING



PROUDLY MADE IN THE U.S.A.



Entertainment Structural Products

Toll Free: (866) 725-6176

Email: info@esp-knx.com

